

USE  
INV  
VEGB  
BLOOMS  
SOILC  
COCOH  
HYDRO

SILVER BULLET  
NUTRIENT

See what all the hype is about...

# Silver Bullet



**DON'T  
buy  
water**

## WHAT IS IT...

97% Sulfur + Enzymatic Ionic Wetting Agent that self mixes & spreads evenly on plant tissue. It leaves little to no residue with an average size of 3 microns. Sulfur is directly related to the terpene levels in plants. It also promotes great structure and growth in vegetative stages. Silver Bullet is safe to spray on vegetables, ornamentals, fruits, vines, and cannabis.

## RESERVOIR DOSAGE

SILVER BULLET		
Reservoir Size (Gal)	1 g/gal	6 g/gal
Total Nutrient Input (g)		
5	5.0	30.0
25	25.0	150.0
50	50.0	300.0
100	100.0	600.0
250	250.0	1500.0

## HOW + WHEN TO USE IT...

Silver Bullet, a Wettable Sulfur, stays suspended in tanks and can be applied as a foliar spray. A good mixture to start clones with is 2-4 grams (1/2-1 teaspoon) per gallon of water. We recommend increasing the dose by 1g each time you apply the product up to 10g/Gal. This mixture should be sprayed on the upper and under side of foliage, giving it a good drenching. We suggest one foliar or root drench per week.

## FEED SCHEDULE (GRAM/GAL)

	VEG				BLOOM								
	1	2	3	4	1	2	3	4	5	6	7	8	9
	2	2	3	4									
foliar	1	1	2	2	1	2	3	4	5	6			
root													

## HOW IT WORKS...

Silver Bullet boosts nitrogen uptake and stimulates carbon, hydrogen and oxygen absorption. Sulfur is an essential element for life and is found in two amino acids.

## CONVERSION

SILVER BULLET	
Volume	Weight (g)
1 tsp	3.8
1 Tbsp	11.6
1 Cup	180.1



## PRO TIPS...

Do not apply Silver Bullet when the temperature is hot (over 24°C/75°F). Also do not apply 21 days after or before using an oil based spray.

- Do not apply after week 3 of bloom
- Safe on clones
- Can dunk plants into Silver Bullet solution
- Keep away from flames or sparks
- Most Sulfur products are oil based which can cause burning. Silver Bullet does not.

- This product does not react well with plants that have a high amount of leaf shine from oil based products. If you have used an oil based product and would like to try Silver Bullet, we recommend to first do a "wash" of microbes, yucca, wetting agent, coconut or aloe and wait 1-7 days depending on amount of leaf shine present. Then mix and apply a small amount of Silver Bullet solution to a few plants to test compatibility.
- To reduce the amount of residue on the leaves, keep above 60-70% for 1-8 hours post application.

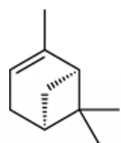
## HOW MANY GALLONS SILVER BULLET

Size	2 g/gal	6 g/gal
	Total Gallons Made	
8 oz.	119.1	39.7
32 oz.	476.2	158.7
4 lb	952.4	317.5
10 lb	2381.1	793.7
30 lb	7143.3	2381.1

## COST PER DOSE SILVER BULLET

Size	2 g/gal	6 g/gal
	Cost per Dose	
8 oz.	\$0.672	\$2.015
32 oz.	\$0.411	\$1.233
4 lb	\$0.398	\$1.194
10 lb	\$0.287	\$0.862
30 lb.	\$0.124	\$0.373

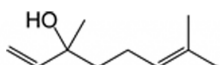
## COMMON TERPENES...



**A-PINENE**

ANTI-INFLAMMATORY  
BRONCHODILATOR  
AIDS MEMORY  
ANTI-BACTERIAL

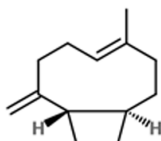
also found in  
pine needles



**LINALOOL**

ANESTHETIC  
ANTI-CONVULSANT  
ANALGESIC  
ANTI-ANXIETY

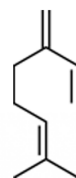
also found in  
lavender



**BETA  
CARYOPHYLLENE**

ANTI-INFLAMMATORY  
ANALGESIC  
PROTECTS CELLS LINING THE  
DIGESTIVE TRACT

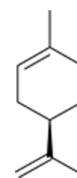
also found in  
black pepper



**MYRCENE**

CONTRIBUTES TO  
SEDATIVE EFFECT OF  
STRONG INDICAS  
SLEEP AID  
MUSCLE RELAXANT

also found in  
hops



**LIMONENE**

TREATS ACID REFLUX  
ANTI-ANXIETY  
ANTIDEPRESSANT

also found in  
citrus



@KEYTOLIFESUPPLY



#POWDERTOTHEPEOPLE

303.955.7838 • orders@ktsupply.com • www.ktsupply.com