

TRIMIT
PRO

INSTRUCTION

www.DLwholesale.com

INSTRUCTION

- How to assemble the Trimit-Pro.
- Replace/Switch/Adjust the blades.

TRIMIT

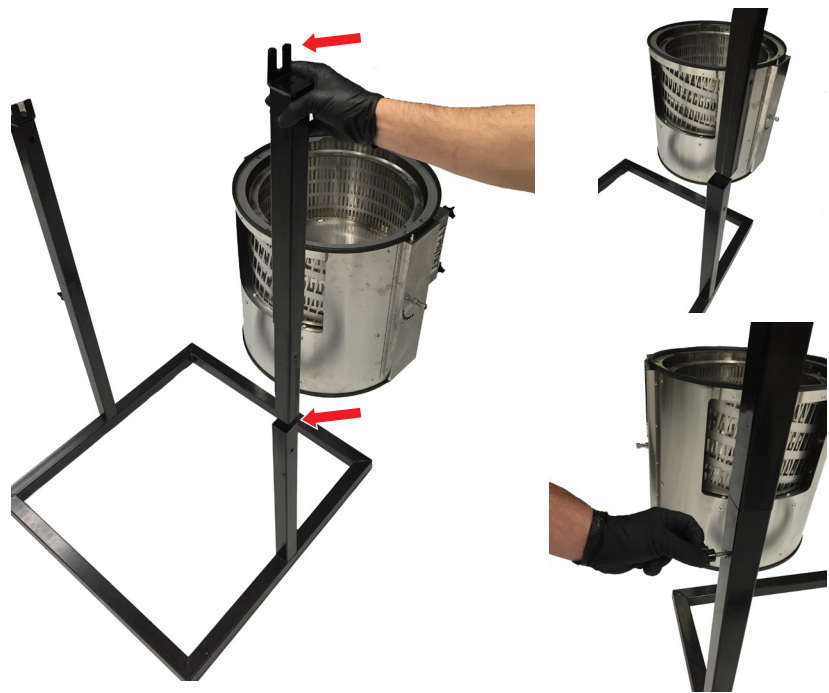
PRO



INCLUDED IN THE BOX

- A** 1 Trimmer Unit
(Mounted w/t Metal Blade)
- B** 1 Base
- C** 2 Stand Arms
- D** 1 Pin
- E** 2 Arm Bolts
- F** 1 Polymer Blade
(for Delicate Trimming)
- G** 1 Barrel Lid
- H** 1 Safety Lid

HOW TO ASSEMBLE THE TRIMIT PRO



STEP 1

Insert stand arms (C) into base (B) using the 2 Arm Bolts (E) to secure to base. Make sure the mounts are facing inward.

Remove safety lid, grab on outer ring of unit (DO NOT MOVE UNIT USING BARREL AS HANDLE) set studs into stand swivel points.



STEP 2

Put unit in horizontal position using Pin (D) inspect the blades separation gap.

Note: when adjusting the blade, turn knobs on either right or left side identically - the blade and barrels outer lip should be flush.

For dry oilless trimming, adjust the blade so $\frac{3}{4}$ of barrel is without contact. The only point of contact should be on the right side of barrel (when looking at the front of machine). The unit spins counter clockwise so material runs up the right side of barrel.

For Super delicate trimming use Polymer Blade (F) This blade lets user get a gapless oilless trim. Designed for Older material and super delicate product (make sure to remove ALL STEMS from material when using this blade - damage done by stems are not covered under warranty).

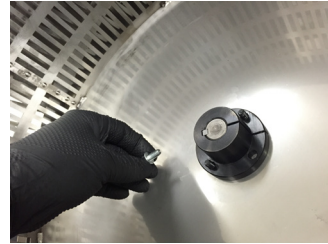
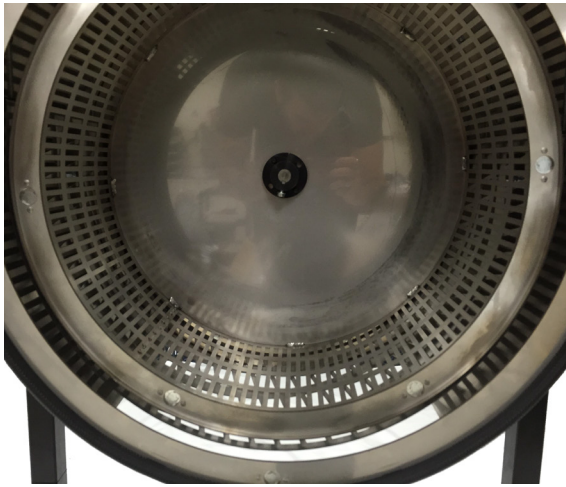
For faster less delicate trimming, adjust blades so all of the right side of the barrel makes contact. (Periodically spray lubricant like Harvest solutions Quick Snip, or any other food grade biodegradable oil).



STEP 3

Remove Pin so unit is in vertical position, remove both barrel and safety cover. Fill unit $\frac{3}{4}$ full with STEMLESS product. Put both lids back (G-H) and put unit in horizontal position. Set timer to 15 min. and enjoy!

REPLACE/SWITCH/ADJUST THE BLADES



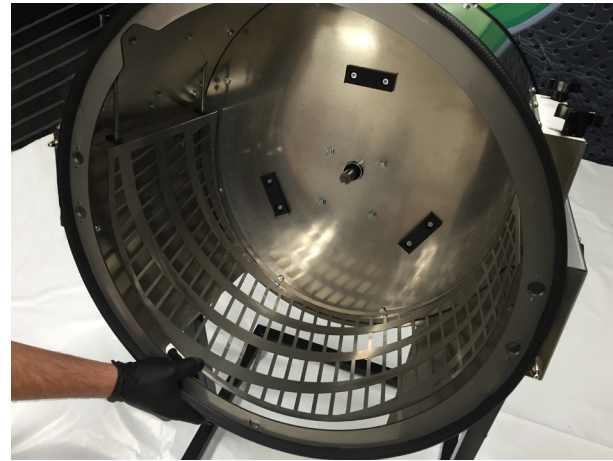
STEP 1

Using a 3/8" wrench loosen the bolt located in the center of the barrel.



STEP 2

Pull barrel outward off shaft (be ready to catch the keeper key).



STEP 3

Unscrew blade adjustment bolts.





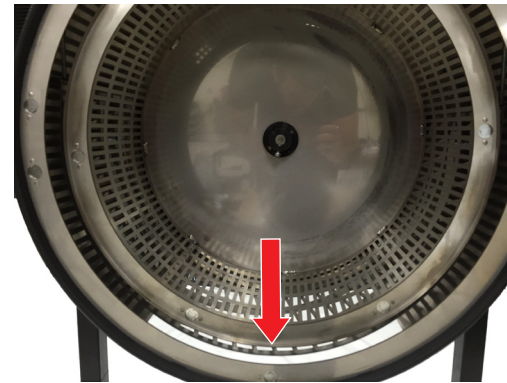
STEP 4

Remove stainless saddle blade and replace with polymer (F).



STEP 5

Return Unit to the horizontal position. Place keeper key in the slot on the center of the barrel. Looking through the shaft hole, align the keeper key with slot on shaft. The barrel should slide right on (do not force anything in this process, warranty will be voided).



STEP 6

Blade adjustment- Turn adjustment knobs evenly, to ensure the barrel and blade stay inline and outer ring stays flush.

